

FRICATIVE HINGE DECK HATCH

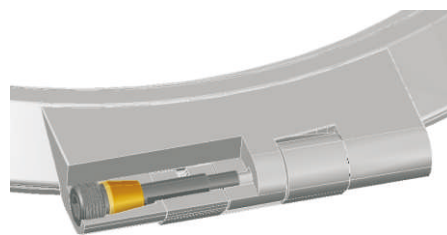
NEW

FRICATIVE HINGE PATENT IN MANY COUNTRIES

New patented design. Unique S/S 316 hinge.
Hatch can be opened at any degree without hatch arm support.
Easy open or close, water-tight, elegance & durability.

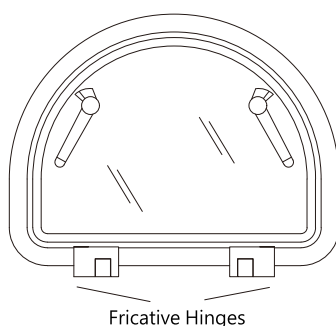
FEATURES

- **CE Approved. According to ISO/DIS 12216**
Deck Hatches are approved for Area II, III, and IV, designs for craft type "any" .
- No bolt holes showing, when hatch is closed.
- 316 stainless steel frames, hatch, and hinges. Hand polished and electro-polished to protect against corrosion. Frames and hatches are made from machine rolled stock to ensure strength and low weight.
- Tough, glare resistant grey acrylic tops.
- Gaskets are oil resistant Sanplane.
- Off-white powder coating are available.



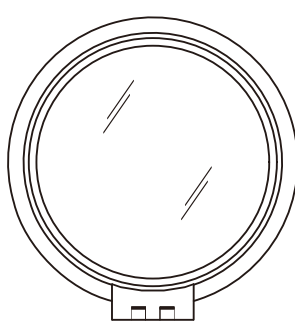
Replace or adjust hatch hinge shaft:
First, pls use 1/8" spanner loosen two set screw inside hinge three turn.
Then use 10mm spanner to adjust both end of hinge patented screw.
After retighten to avoid shake.

LDHS

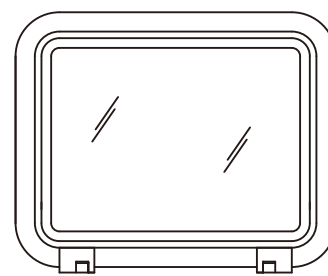


Fricative Hinges

LDHR

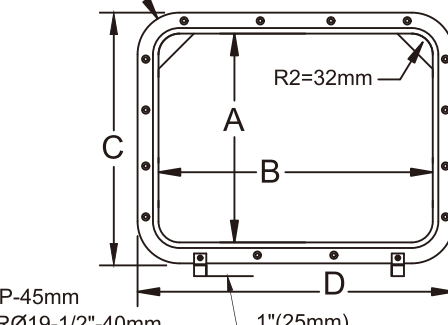
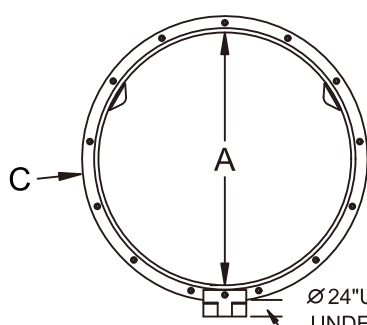
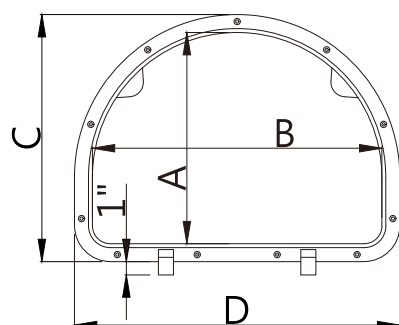


LDH



R1=64mm

R2=32mm



32mm(1-1/4")

Ø 24"UP-45mm
UNDERØ19-1/2"-40mm

1"(25mm)



CUT OUT SIZE(A X B)

- **HATCHES SHOULD BE FITTED TO A FLAT SURFACE WITH A MAXIMUM TOLERANCE OF ± 2 MM.**